



Users guide RoofCon Viewer

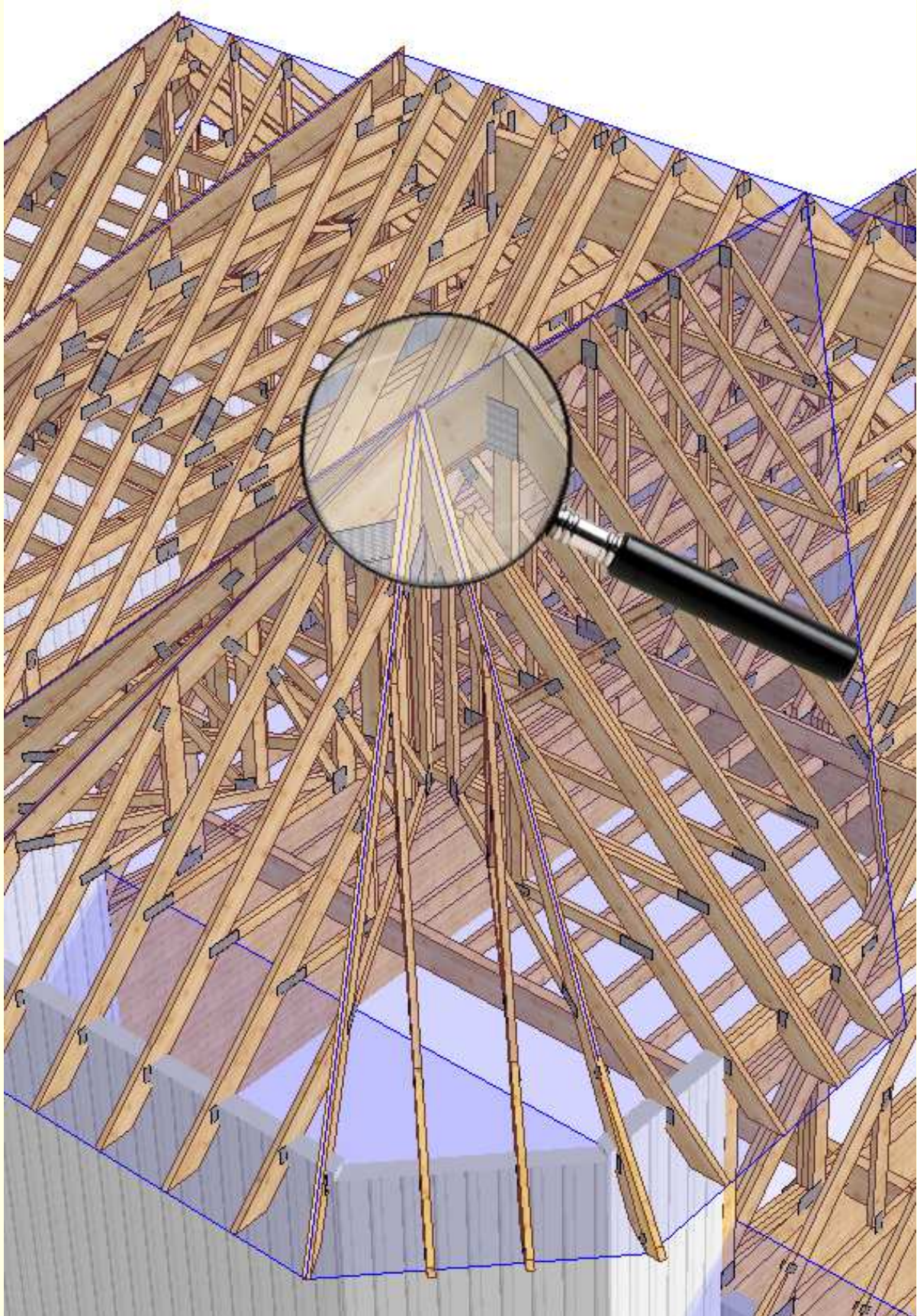


Table of contents

Users guide RoofCon Viewer.....	1
Table of contents	2
Installation	3
Select object.....	3
Zoom	3
Measure distance	3
Toolbar and Drawing preferences	4
Layer.....	5
3D	6
Print preview	7
Print.....	7

Installation

RoofCon viewer makes it possible for those who don't have a RoofCon license to open a RoofCon project and e.g. look at it in 3D, print it and read measures.

Download and Install RoofCon Viewer

The program is available for download at our homepage www.csce.se, **Downloads**. Start the download by clicking on the "Download now" link below the RoofCon Viewer 2008 text. Run the file and follow the installation instructions.

The program is installed at C:\Programs\RcwViewer as default, but you can change the path if you like.

Open a Viewer file

When you receive a mail with a Viewer file you open it by either double clicking it or by right clicking and selecting **Open** (you can also save the file).

Select object

There are three ways to select one or many objects on the layout:

- Click on the wanted truss in the truss list.
- Click on the wanted object with **left** mouse button.
- Click and drag a box over the objects you want to select with **left** mouse button. If you click and drag the box from right to left all objects that are totally or partially included in the box are selected. If you drag the box from left to right all objects that are totally included are selected.

Zoom

There are two ways to zoom on the layout and in 3D.

- Click and drag a box over the area you want to zoom in with the **right** mouse button.
- Use the scroll wheel, origin is at the mouse pointer.

To zoom all you use  or the **Home** hotkey.

Measure distance

Measure distance on the layout

Select the tool **Measure distance**  or the **F8** hotkey.
with

Now you can **click and drag** between the wanted dimension points. The measured distance and the angle are shown at the bottom left corner of the screen.

Xd=0.00 Yd=2700.00 L=2700.00 V=90.00 Zd=1375.72 L3d=3030.28 V3d=27.000

Toolbar and Drawing preferences

The toolbar

With the toolbar you can quickly access various tools.




When hovering with the mouse pointer over a button a tooltip that explains the function of the button will appear.

In 3D there are even more tools. You can easily use the buttons on the toolbar to change the appearance of walls, roof surfaces, trusses, and what level (ceiling, rafter or all levels) that should be active. There are also preset elevation views available.

Drawing preferences

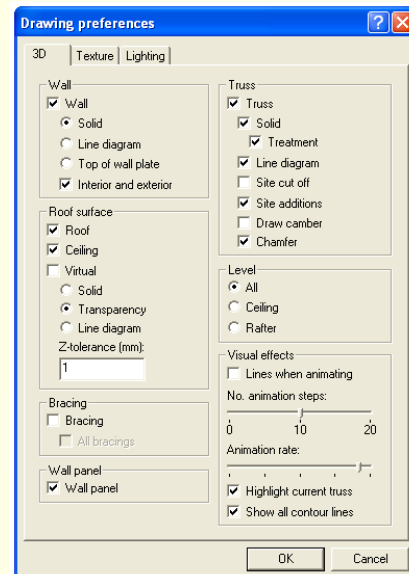
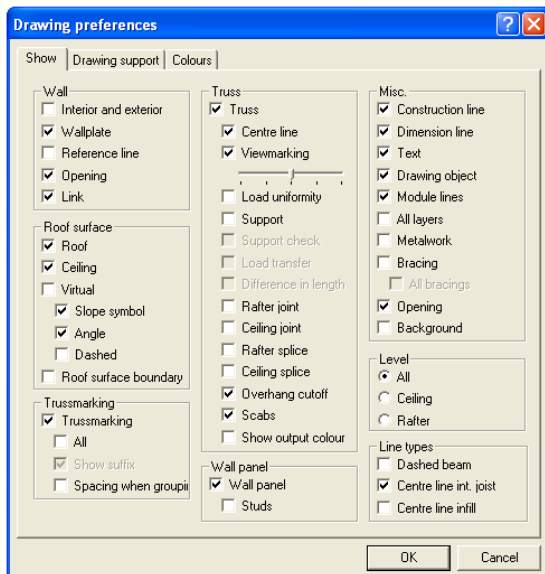


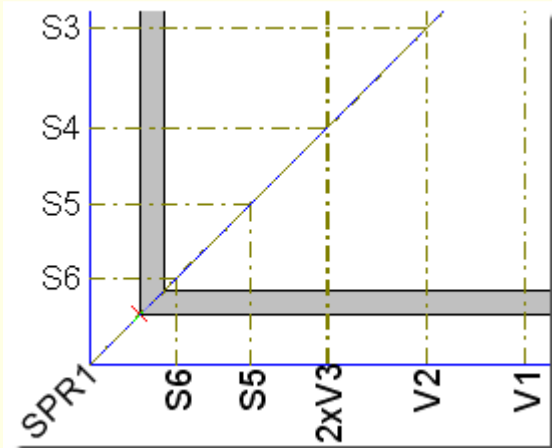
By using , right click on the layout or **View | Drawing preferences** in 3D you open the **Drawing preferences** dialog.

In this dialog you have the possibility to change the appearance of the layout. You can e.g. choose if you want viewmarks or supports to be visible. You can also choose various line types to mark beams or intermediate floor joists.

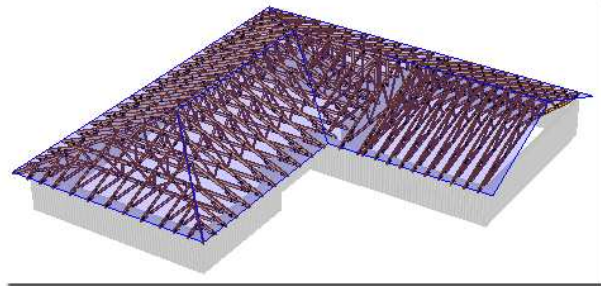
The 3D dialogue has different viewing preferences. Here you can for example choose if you want to see site additions and bracings.

★ *Advanced – In the **Texture** tab it is also possible to change texture on trusses, walls, roof surfaces and change the colour of transparent roof surfaces.*

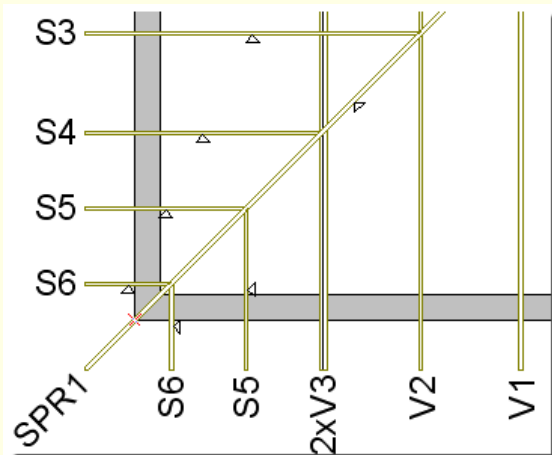




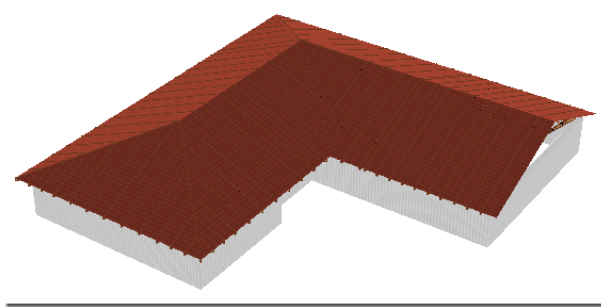
Truss **centre line**



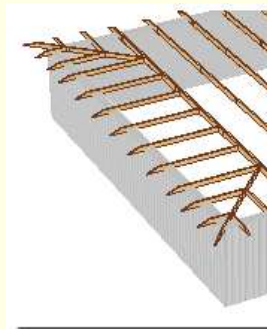
Roof surface **transparency**



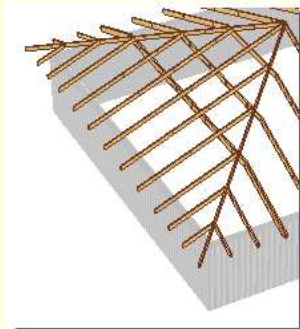
Truss **view mark**



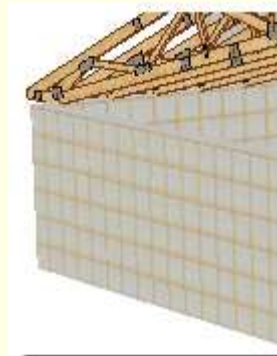
Roof surface **solid**



Level **ceiling**



Level **rafter**



Wall **solid**



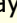
Wall **solid with interior and exterior**

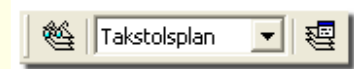
Layer

Layer/ background objects

The one creating a Viewer file can choose whether the features **Layer/ background objects** should be accessible or not for the RoofCon Viewer user.


In RoofCon it is possible to use layers when drawing a project. As a RoofCon Viewer user you cannot create your own layers, but you can select which of the existing layers that should be shown or hidden on the layout or in 3D.

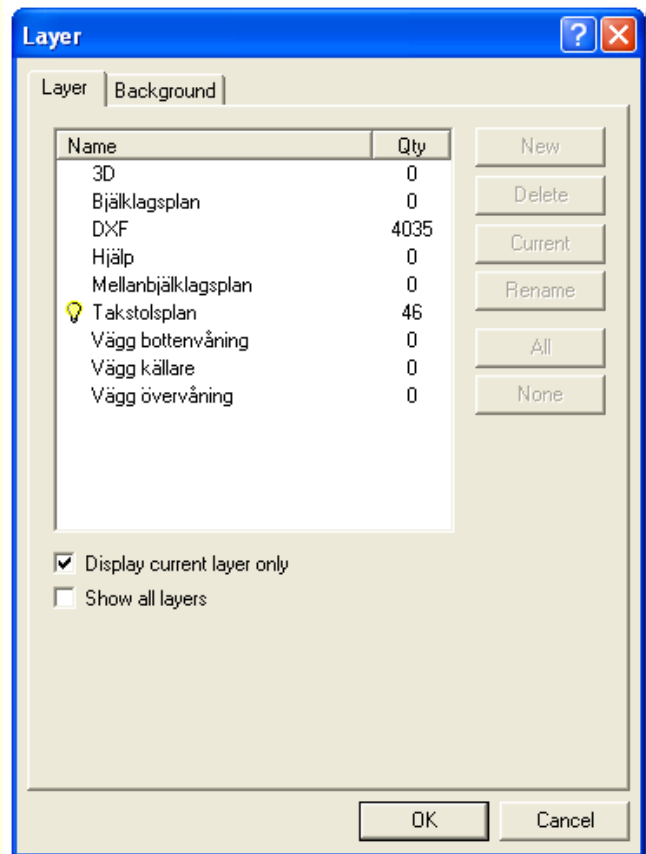
In the layer list, on the **Layer** toolbar, you can choose which layer that should be active (marked with ) . The button to the left (with the glasses) sets all layers visible.




The last button on the toolbar opens the **Layer** dialog. Here you can choose which layers and backgrounds that should be visible.

The **Qty** column shows the numbers of objects in every layer and can therefore make it easier for you to know which layers that are relevant.

 *Note - Backgrounds should not be taken for drawing objects since they unlike drawing objects are not visible on printouts, backgrounds are only visible on the screen.*



3D

You enter the 3D view with  or by pressing the **F3** hotkey. To return to the layout you use the button or press **F3** again.

With the toolbar in 3D you can e.g. adjust how and if walls, roof surfaces and trusses should be shown.

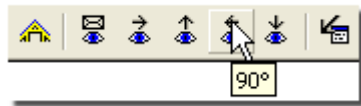


Navigate

You can turn and rotate the object by **click and drag** with your mouse. It is possible to zoom by dragging a box with right mouse button or by using the scroll wheel. You can pan with the arrow keys.

 *Advanced – Pressing the Shift key and dragging with left mouse button to zoom and rotate the object. Right mouse button pan.*

There are also preset elevation views that show fixed 3D views.

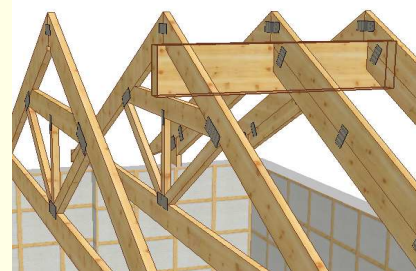


Show trusses

To show a specific truss you can click at it in 3D or select it on the layout view or in the truss list to the left on the screen before you enter the 3D view. To select multiple trusses in the list you press and hold **Ctrl** while you select the wanted trusses in the list or you can click and drag a box with left mouse button on the layout (see **Select object**).

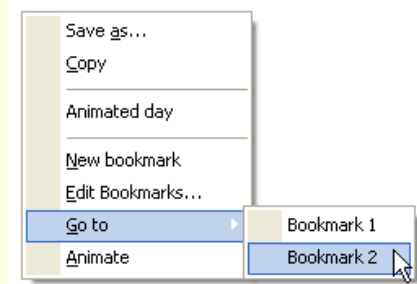
Show contour lines for current truss or timber piece

If you place the mouse on a truss it will become highlighted with all contour lines as default. If you want to decrease the number of contour lines you do that in **View | Drawing preferences**.



Bookmark

In 3D you can create bookmarks. By clicking the right mouse button you get the option to create a **New bookmark** and the current 3D view is saved. To show a bookmark, right click and choose **Go to | Bookmark 1, 2 etc.** You can print a bookmark by using the **Print wizard** or opening the bookmark and choose **Print**.



 *Note – Bookmarks are not saved in the project.*

Print preview

Activate the tool **Print preview** by clicking  or by pressing the **F4** hotkey.

The **Print preview** gives you the possibility to see the layout will before you print it. You can also make some changes e.g. which objects that should be shown or hidden and choose various layers to print (if the layer feature is available for you – selected by the RoofCon user).

Print

Print-outs

Print-outs can be made from the layout, from 3D or when you are in the **Print preview** mode. The settings are done in **Tools | Settings roof** and in **File | Print setup** (where you can choose print-out size). The PDF tab opens the settings for PDF print-outs, you can also find this feature in the **Print wizard** (see below).

Print wizard

It is possible to get print-outs of different outputs with various numbers of copies and to different printers with the **Print wizard**. You will find the tool on the **File** menu or by clicking **Ctrl+Shift+P**.

In this dialog you choose which output you want to print, to which media, the number of copies, size and orientation. You can change the print order with the *up* and *down* arrows.

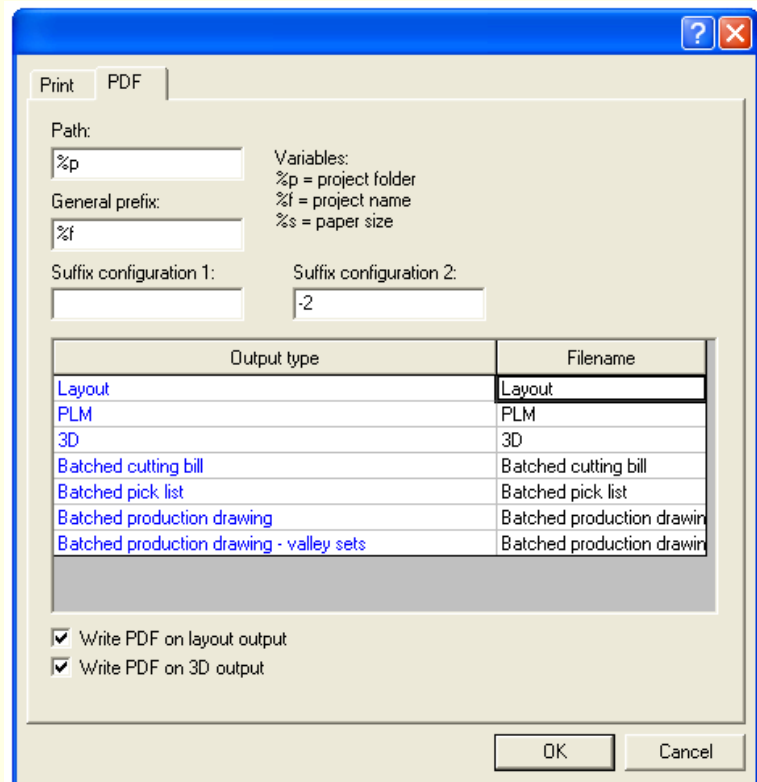
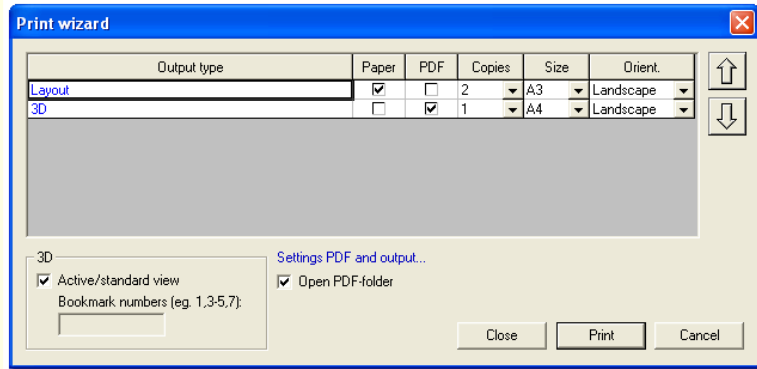
When you choose a 3D output you are able to decide if you want to print the current 3D view (if you don't have any 3D view open that means the program's default view) or specified bookmarks. Notice that if you don't specify any bookmarks **all** bookmarks will be printed (read more about bookmarks in the 3D section).

The hyperlink **Setting PDF and output...** opens this dialog and here you are able to do all the settings for PDF output.

The **Path** can be specified to an optional folder e.g. on the network or in the project folder by typing %p.

A **General prefix** can be used if you want to give all outputs a prefix (the PDF file is saved with the name of your chosen prefix and the default file name e.g. 1234 – Layout, 1234 – Batched cutting bill etc.). The project name is added by typing %f.

The suffix for configurations can be used to separate truss outputs when you print two configurations at the same time (they must differ to avoid overwriting one of the files). The settings described to the right will give the following results:
1234 – T1 (configuration 1)
1234 – T1 -2 (configuration 2)



The two checkboxes for **Write PDF...** will, when not using the **Print wizard**, always give you a layout or the current 3D view as a PDF in the folder you have specified in the **Path** (at the top of the dialog).